

Room Temperature and CO₂ sensor

Range 0-50°C, 0-2000ppm CO₂

Two outputs 0 -10v dc

Options – digital display or no display



Room Temperature Sensor

Also used as low limit temperature sensor

Range 0 - 40°C

Output 0 - 10v dc



Outside Air Temperature Sensor

Range 0-40°C

Output 0 - 10v dc



Wind Speed and Direction Sensor

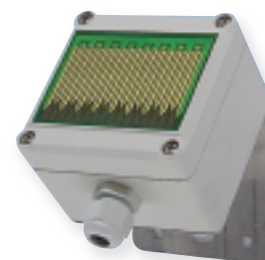
Range 0-50m/s, 0-360°

Two outputs 0 - 10v dc



Rain Sensor

24v dc switched output



September 2012

Blue River Controls Limited

Unit 4A, Marsh Hill Farm, Marsh, Aylesbury, Bucks HP17 8ST
Tel: 01296 613110 Email: sales@bluerivercontrols.co.uk



blue river
controls limited